



# UTILITY HEATER

Item # 77UH  
500 Watts, 120 Volts

## WARNING- DO NOT IMMERSE THIS HEATER IN ANY LIQUID

### Features

- 500 Watts
- Compact design
- Adjustable, broad-range thermostat
- Durable heavy-gauge steel construction
- Baked-on enamel finish

### Uses

- Under metal fountains, buckets and waterers
- As a space heater inside various enclosures
- Must not be used around plastic

### Directions

Rotate knob clockwise to increase temperature setting, turn counterclockwise to decrease setting.

### Caution

- This heater must not come into contact with any combustible materials (plastic, wood, paper, etc.)
- The heating element will become red hot and ignite combustible materials
- Do not use with plastic containers
- Do not use where the unit can be tipped into combustible materials

### To Avoid Electric Shock

- Use only with properly grounded outlets
- Use with a Ground Fault Circuit Interrupter (GFCI) in the circuit
- Do not use in water or any liquid
- Do not use in areas that are subject to splashing water or flooding

Miller Manufacturing, Glencoe, MN 55336 USA • [www.miller-mfg.com](http://www.miller-mfg.com)

297904



# UTILITY HEATER

Item # 77UH  
500 Watts, 120 Volts

## WARNING- DO NOT IMMERSE THIS HEATER IN ANY LIQUID

### Features

- 500 Watts
- Compact design
- Adjustable, broad-range thermostat
- Durable heavy-gauge steel construction
- Baked-on enamel finish

### Uses

- Under metal fountains, buckets and waterers
- As a space heater inside various enclosures
- Must not be used around plastic

### Directions

Rotate knob clockwise to increase temperature setting, turn counterclockwise to decrease setting.

### Caution

- This heater must not come into contact with any combustible materials (plastic, wood, paper, etc.)
- The heating element will become red hot and ignite combustible materials
- Do not use with plastic containers
- Do not use where the unit can be tipped into combustible materials

### To Avoid Electric Shock

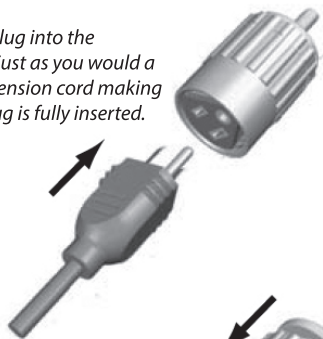
- Use only with properly grounded outlets
- Use with a Ground Fault Circuit Interrupter (GFCI) in the circuit
- Do not use in water or any liquid
- Do not use in areas that are subject to splashing water or flooding

Miller Manufacturing, Glencoe, MN 55336 USA • [www.miller-mfg.com](http://www.miller-mfg.com)

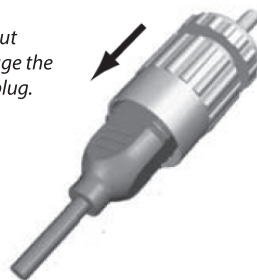
297904

## Instructions for use with the API™ LOCKNDRY™

1. Insert the plug into the receptacle just as you would a normal extension cord making sure the plug is fully inserted.



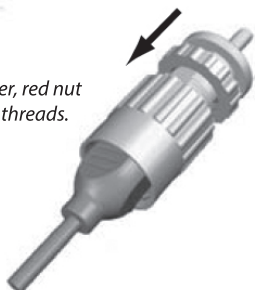
2. Slide the large nut forward to engage the threads on the plug.



3. Rotate the nut to tighten the plug.



4. Slide the second, thinner, red nut forward to engage the threads.



5. Rotate the red nut snugly against the larger nut.

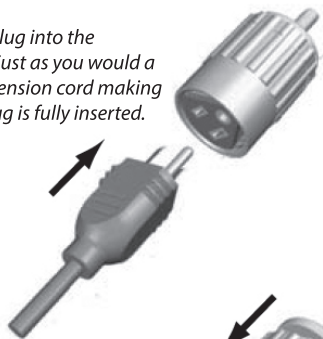


### Features

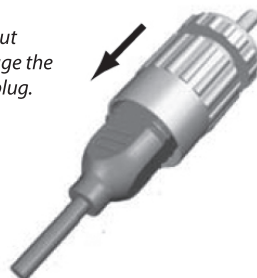
- Plugs into any normal 3-prong outlet
- Mates with LOCKNDRY plugs to form a water-resistant seal
- Keeps connection from separating during use
- Second, locking nut for secure connections

## Instructions for use with the API™ LOCKNDRY™

1. Insert the plug into the receptacle just as you would a normal extension cord making sure the plug is fully inserted.



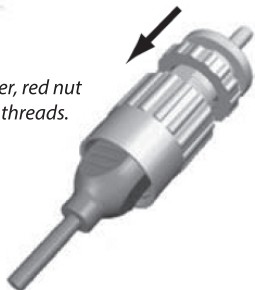
2. Slide the large nut forward to engage the threads on the plug.



3. Rotate the nut to tighten the plug.



4. Slide the second, thinner, red nut forward to engage the threads.



5. Rotate the red nut snugly against the larger nut.



### Features

- Plugs into any normal 3-prong outlet
- Mates with LOCKNDRY plugs to form a water-resistant seal
- Keeps connection from separating during use
- Second, locking nut for secure connections